



Latvijas
Paukošanas
federācija



EUROFENCE LEAGUE

21-22.03.2026

U23 European Circuit

28-29.03.2026

DAUGAVPILS

Welcome To Daugavpils



Daugavpils is the second-largest city in Latvia and an important regional sports and cultural centre, ideally suited for international competitions, training camps, and youth tournaments. Located in the Latgale region, the city combines professional sports infrastructure, compact logistics.

Competition venue



Olympic centre , Stadiona street 1, Daugavpils, LV-5401, Latvia

<https://maps.app.goo.gl/QDXDz5L2Ww2wjPYR6>

COMPETITION SCHEDULE

EUROFENCE LEAGUE

<i>Friday 20.mar</i>	<i>18:00 – 21:00</i>	<i>Payments – entry , preliminary weapon control</i>
<i>Saturday 21. mar</i>	<i>07:00 – 8:00</i>	<i>Payments – entry</i>
	<i>08:00</i>	<i>Referees meeting</i>
	<i>09:00</i>	<i>Start of pools for MEN followed by the DE</i>
	<i>19:00</i>	<i>Final 4</i>
<i>Sunday 22. mar</i>	<i>07:00 – 08:00</i>	<i>Payments – entry</i>
	<i>08:00</i>	<i>Referees meeting</i>
	<i>09:00</i>	<i>Start of pools for WOMEN followed by the DE</i>
	<i>19:00</i>	<i>Final 4</i>

U23 EUROPEAN CIRCUIT

<i>Friday 27. mar</i>	<i>18:00 – 21:00</i>	<i>Payments – entry , preliminary weapon control</i>
<i>Saturday 28. mar</i>	<i>07:00 – 8:00</i>	<i>Payments – entry</i>
	<i>08:00</i>	<i>Referees meeting</i>
	<i>09:00</i>	<i>Start of pools for MEN followed by the DE</i>
	<i>19:00</i>	<i>Final 4</i>
<i>Sunday 29. mar</i>	<i>07:00 – 08:00</i>	<i>Payments – entry</i>
	<i>08:00</i>	<i>Referees meeting</i>
	<i>09:00</i>	<i>Start of pools for WOMEN followed by the DE</i>
	<i>19:00</i>	<i>Final 4</i>

Inscriptions: Inscriptions must be done through the EFC website by the national federation's offices, according to EFC rules.

Entry fee: 35 Euro per fencer

Competition format: EFC regulations will apply throughout the competition. Individual - one round of pools followed by direct elimination.

Referee Obligation:

1-3 fencers	No referee required
4-9 fencers	1 referee
10 – 15 fencers	2 referees
16 or more	3 referees

ACCOMODATION

DINABURG SPA HOTEL



Official hotel for officials, referees, coaches, and teams.

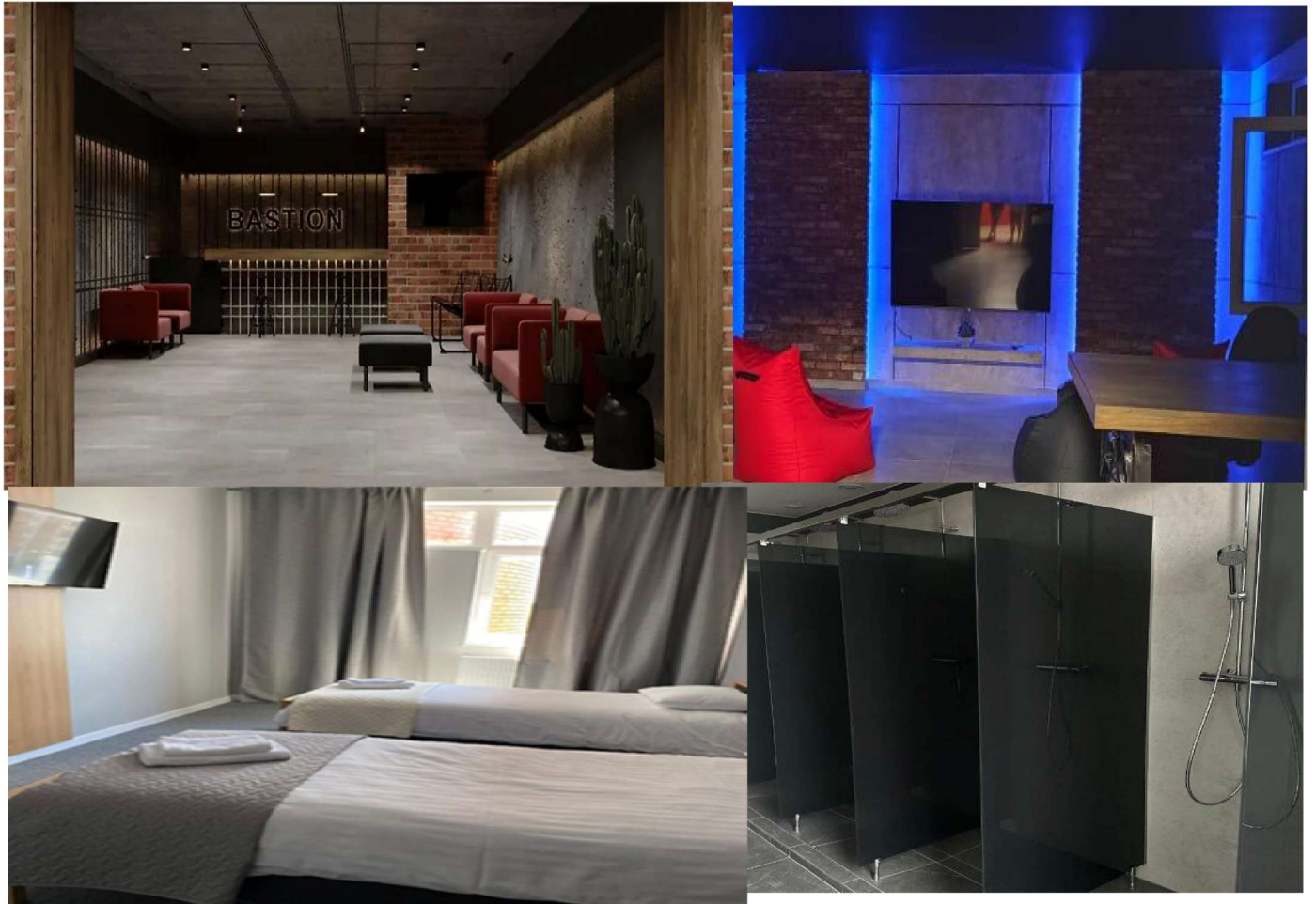
Single, Double, Triple rooms Junior Suites & Suites

Single room 50 EUR , Double room 65 EUR , Triple room 95 EUR

Meals (indicative prices): Lunch – €7 , Dinner – €7

<https://maps.app.goo.gl/GWdYJQrh58vYKUNx6>

HOSTEL BASTION



Budget-friendly accommodation for teams, athletes, and accompanying staff.

From 25 EUR per person , per night

<https://maps.app.goo.gl/eF3z6cTZVRjjUD917>

TRANSFERS

Upon request from Riga , Kaunas (Lithuania) and Vilnius (Lithuania) airports.
Price 50 – 90 EUR per person.

FOR TRANSFER AND HOTEL BOOKING PLEASE SEND FORM to travel@paukosana.lv
FORM : https://ej.uz/daugavpils_travel

TRAINING CAMP



A training camp will be possible on request for competitive epee fencers from 23-26. March 2026

For more information about training camp please contact with Aleksandrs Plaskins by e-mail plaskin@inbox.lv or by phone +371 28808226

Registration form for training camp

<https://forms.gle/NmQdaUX8aHMsgFKu8>

CONTACTS

LATVIAN FENCING FEDERATION

Legal address: Riga, R. Feldmana st. 11-7, LV-1014

Baiba Brandule, mob. +37129565661

sacensibas@paukosana.lv

Fencing club ESPA DAUGAVA

Head coach : Aleksandrs Plaskins

phone +371 28808226